

...active in passive safety.

SIGNAL POST COMPOSITE SOLUTION SAFETY



Jerol Signal Post product family consists of four posts, 114, 140, 168 and 219.

The Posts are cylindrical and built of two layers, the inner layer of reinforced glass fibre polyester and the outer layer of UV-resistant coloured polyolefin.

Posts for city areas have straps between the layers.

The estimated life of the Post is over 60 years.

The Sign Posts strengths are calculated according to EN 40.

The posts are adapted to accept all existing standard signal equipments.

Crash tested and approved according to EN 12767.

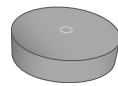
Classification: NE 100: 2, without compartment damage



Jerol

Signal Post

Top cap



Frame, cylindrical



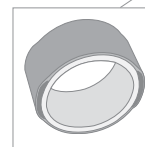
Access door



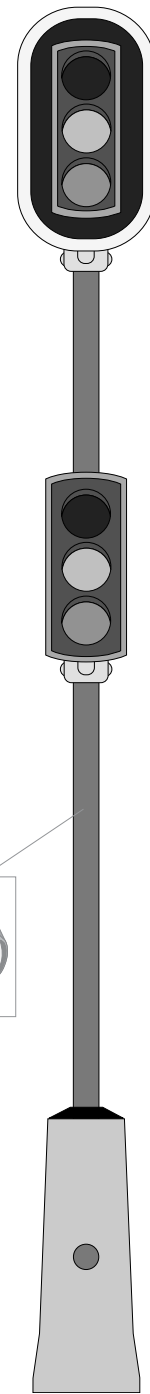
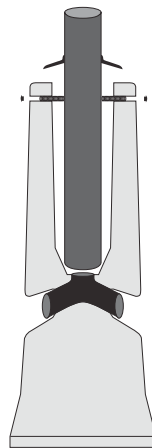
Rubber cuff



Pressure ring



Foundation



Scheme:		
Type	No.	Notes